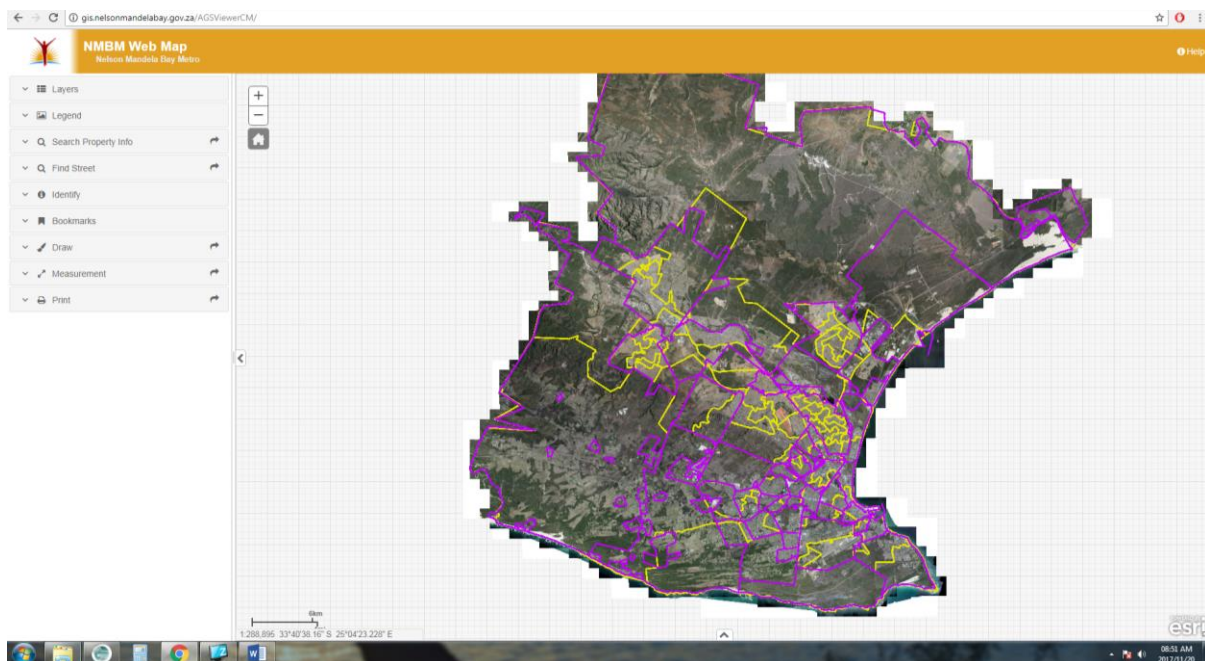


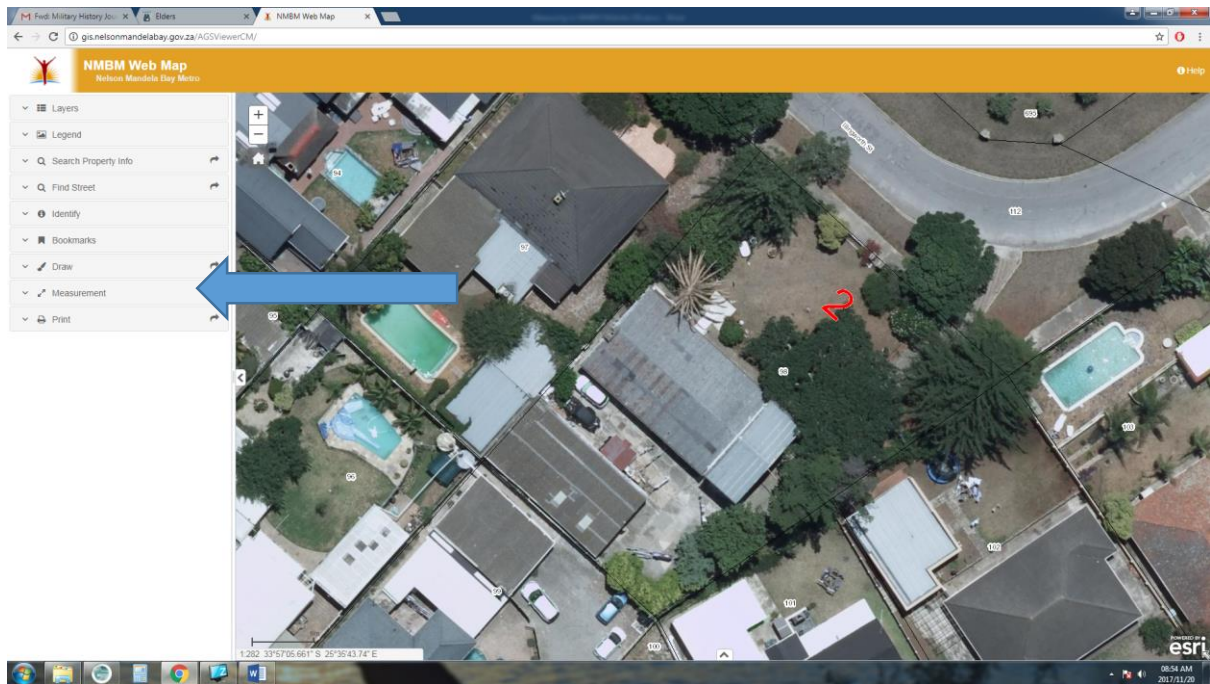


Click on map in the above screen.

The screen below will open up.

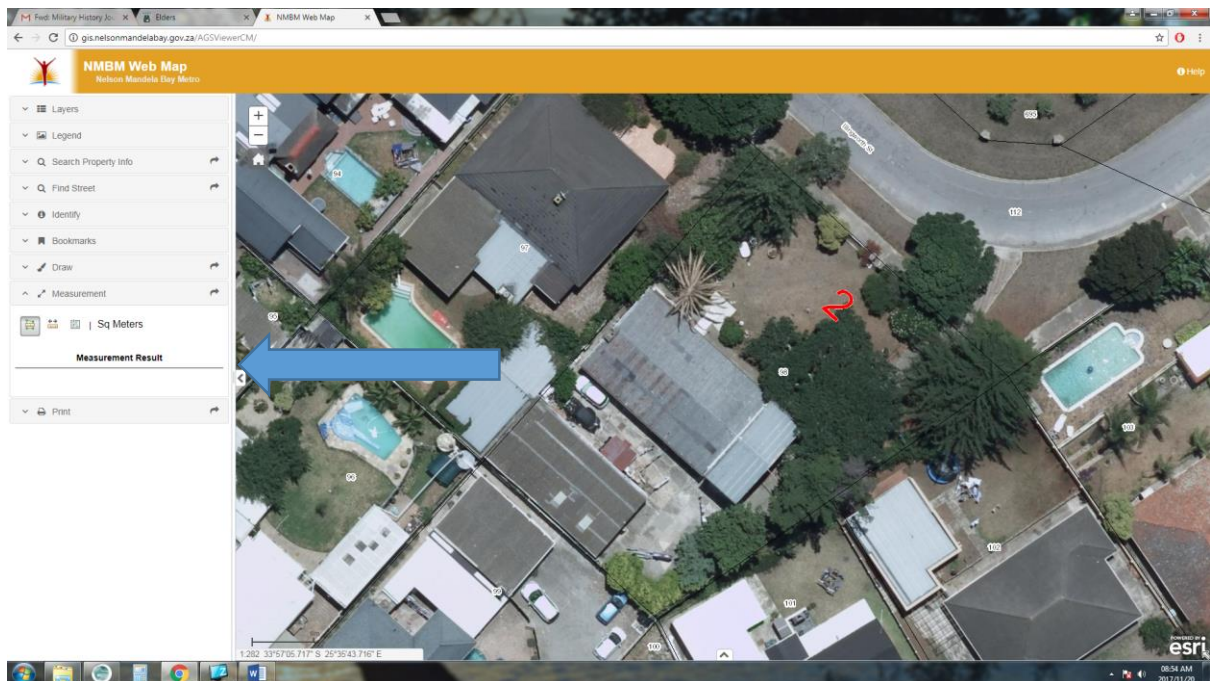


Now search or zoom in to the property you are looking for.



You can now click on the measure tool.

The menu will open up as seen below, click on the area tool and change the unit of measurement to the one you want to use the default is sqmeters.



Now start to click with the left mouse button the area you want to measure. The last point in the measurement is double clicked with the left mouse button. The measurements will show up in the measurement tool.

