

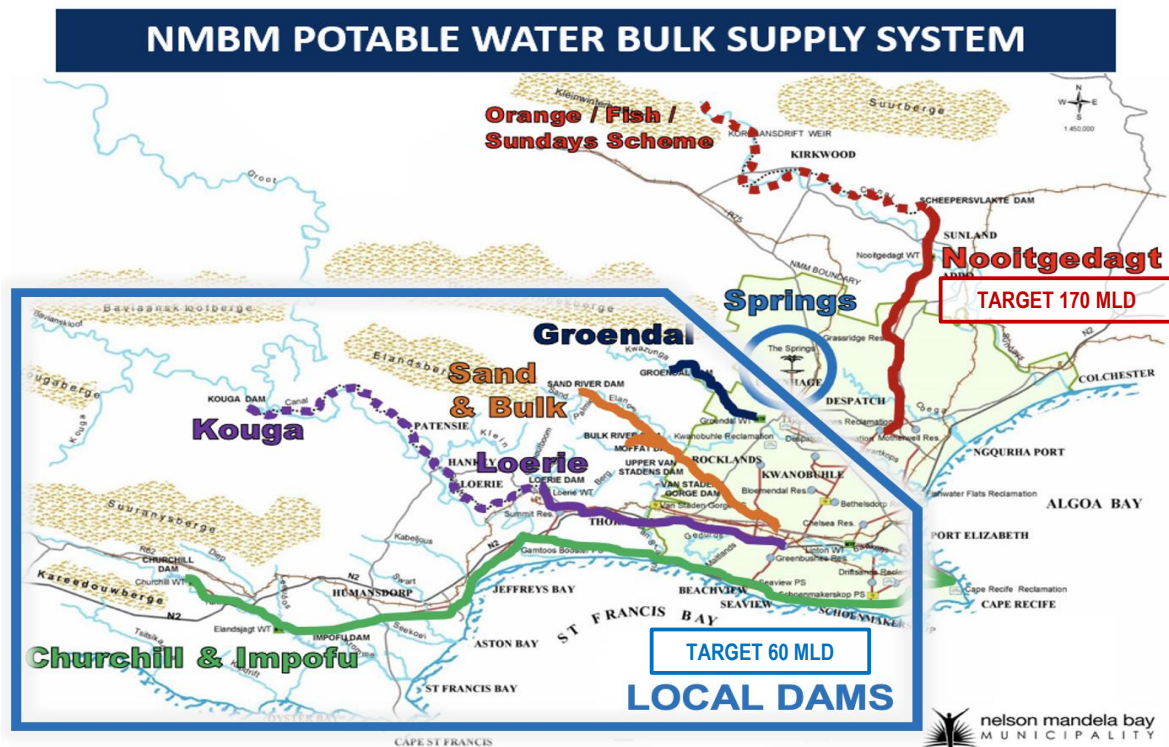
# WATER SUPPLY & USAGE STATISTICS

as at day, Thursday 2 February 2023

TOTAL DAM STORAGE	CHANGE FROM A WEEK AGO	WATER PRODUCED (SEVEN-DAY AVERAGE)
13.41%	-48.90%	300 MLD

**NMBM TARGET DEMAND = 230 MILLION LITRES PER DAY (MLD)**

70 MLD USED OVER TARGET!



\* Note that the targets consider infrastructure reliability, system interconnectivity, and the recovery of local dams.

ONLY 8.03% AVAILABLE LOCAL DAM STORAGE!

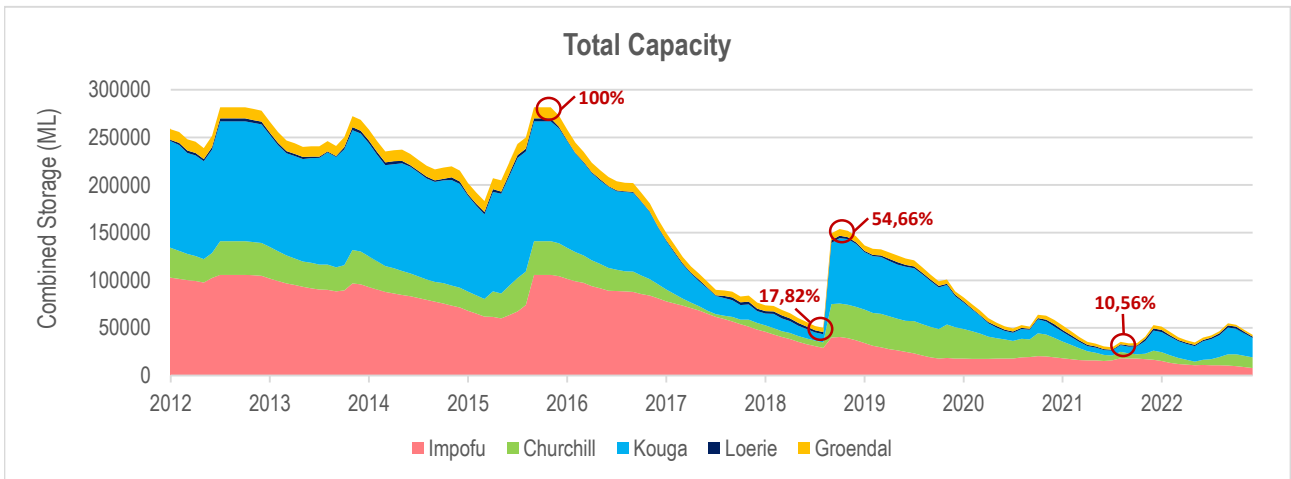
System	Dam	Storage capacity (ML)	Current storage (%)	Dead storage (%)	Available storage (%)	Available water (ML)
Kromme	Churchill	35,240	28.30	7.5	20.80	7,330
	Impofu	105,757	6.91	7.0	0.00	0
Kouga	Loerie	3,026	47.88	19.0	28.88	874
	Kouga	125,910	13.78	3.3	10.48	13,195
Groendal	Groendal	11,638	14.51	4.2	10.31	1,200
Total		281,571	13.41	5.4	8.03	22,599

## WHEN WILL LOCAL DAMS RUN DRY?

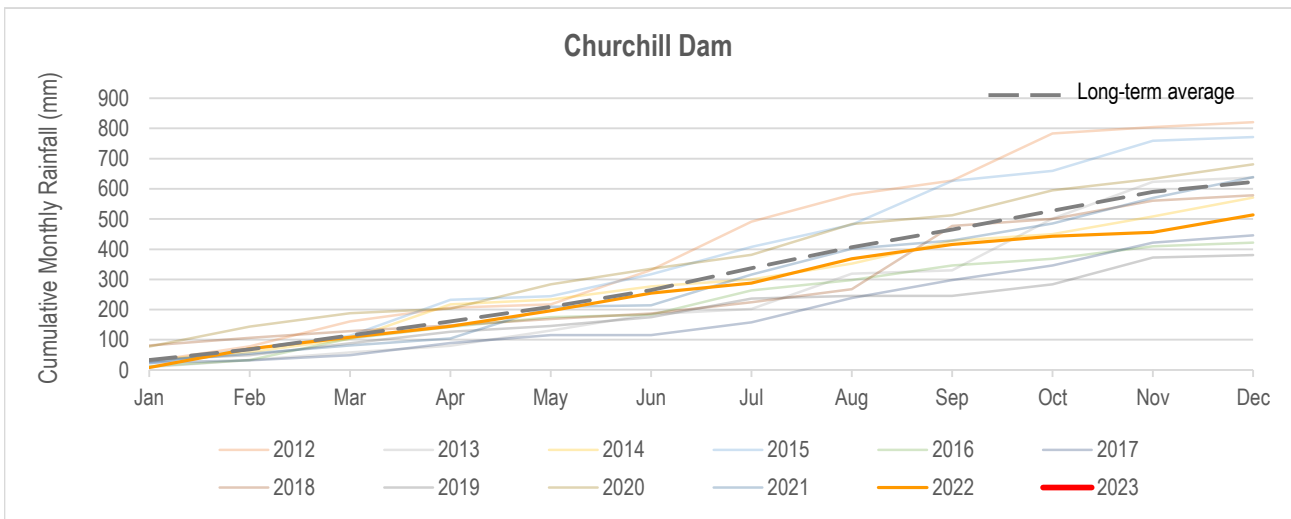
System	Dam	Available water (ML)	RESTRICTED		ACTUAL	
			Usage (MLD)	Water remaining (Days)	Usage (MLD)	Water remaining (Days)
Kromme	Churchill	7,330	31	236	50	147
	Impofu	0				
Kouga	Loerie	874	95	148	95	148
	Kouga	13,195				
Groendal	Groendal	1,200	5	240	8	150

\* Abstraction from Kouga Dam (95MLD) includes the NMBM's allocation from Loerie Dam (41MLD), Gamtoos Irrigation Board (33MLD), Hankey & Patensie (2MLD), direct irrigators and canal losses.

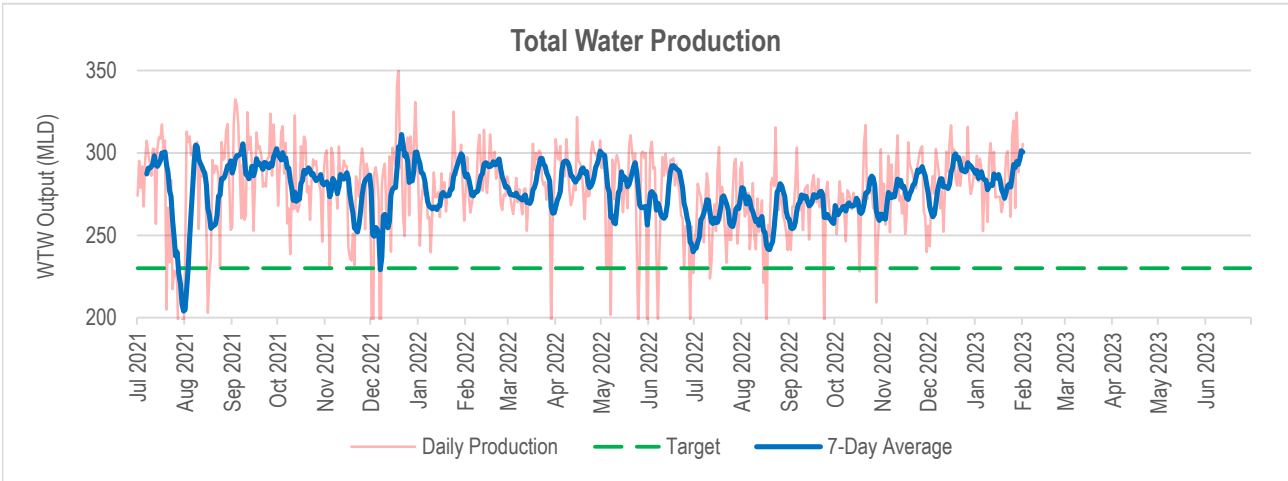
## LOCAL DAM STORAGE



## RAINFALL IN CATCHMENT AREAS

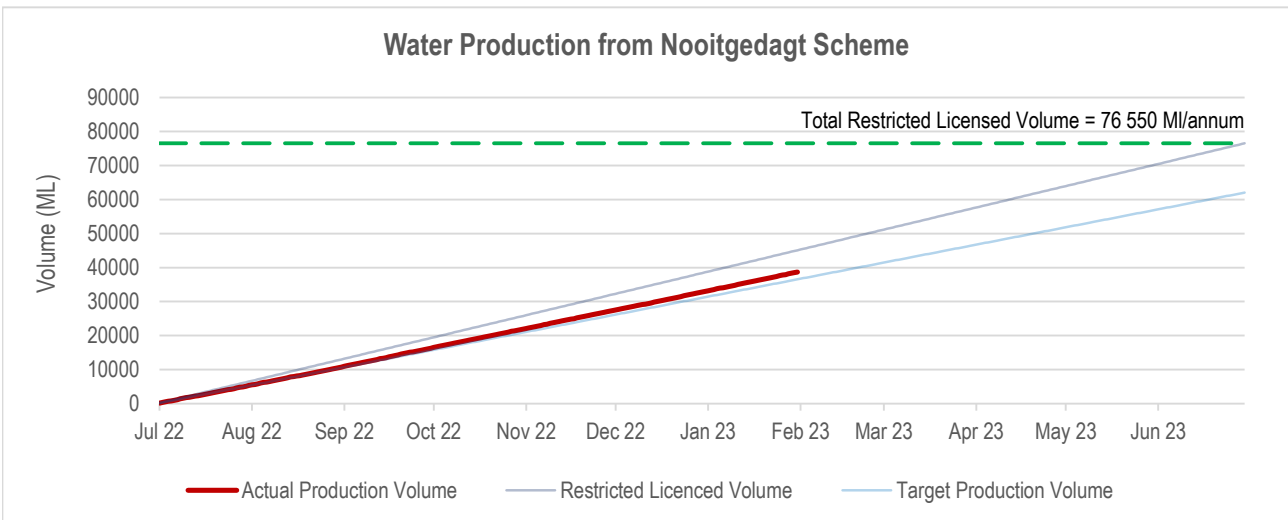
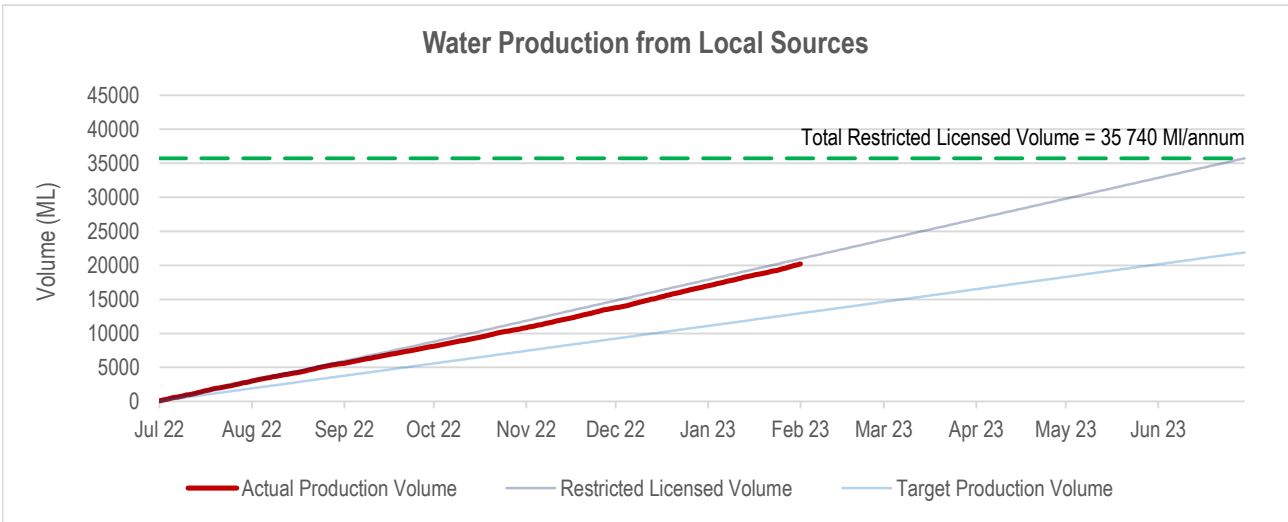


## WATER SUPPLIED BY NMBM

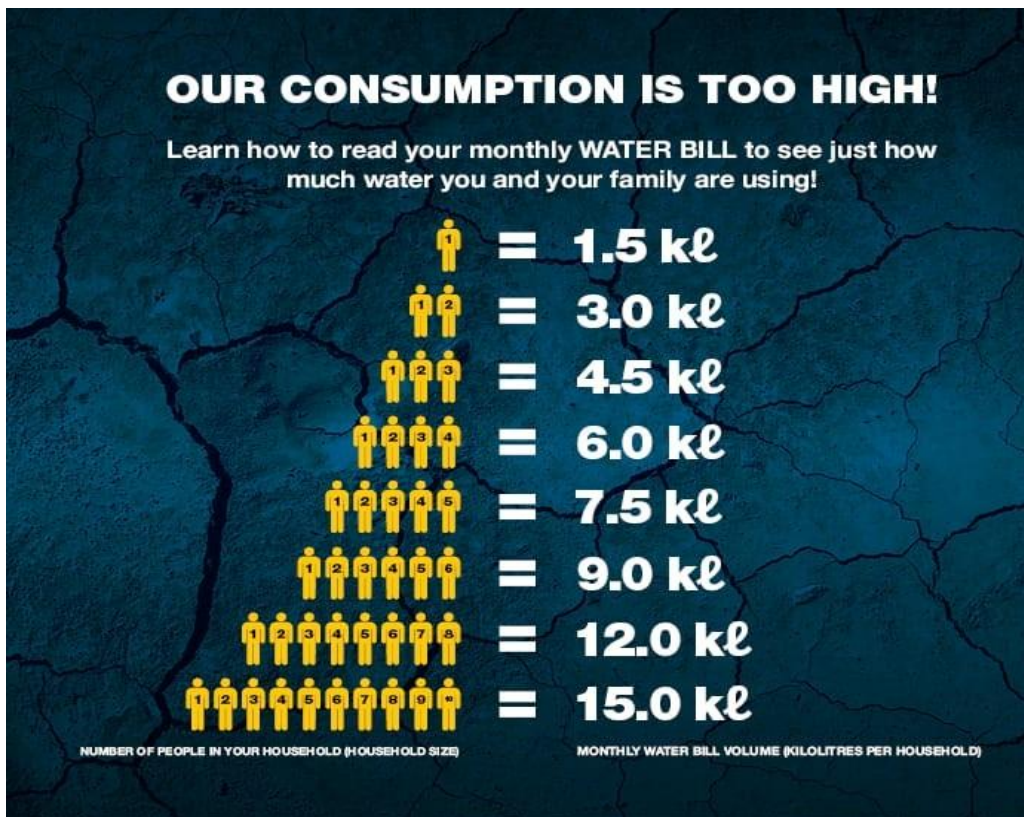


<b>117 MLD</b>	<b>179 MLD</b>	<b>4 MLD</b>
<b>Local Dams</b>	<b>Nooitgedagt Scheme</b>	<b>Groundwater</b>

## LICENSED ABSTRACTION BY NMBM



## WHAT SHOULD I DO?



## ONLY USE 50 LITRES PER PERSON PER DAY

 <b>2ℓ</b> Drinking water	 <b>2ℓ</b> Cooking water	 <b>2ℓ</b> Washing hands	 <b>9ℓ</b> 1 toilet flush	 <b>10ℓ</b> 2 minute shower
 <b>9ℓ</b> 1 sink of dishes	 <b>5ℓ</b> Household cleaning	 <b>1ℓ</b> Water for pets	 <b>10ℓ</b> Laundry	