

WATER SUPPLY & USAGE STATISTICS

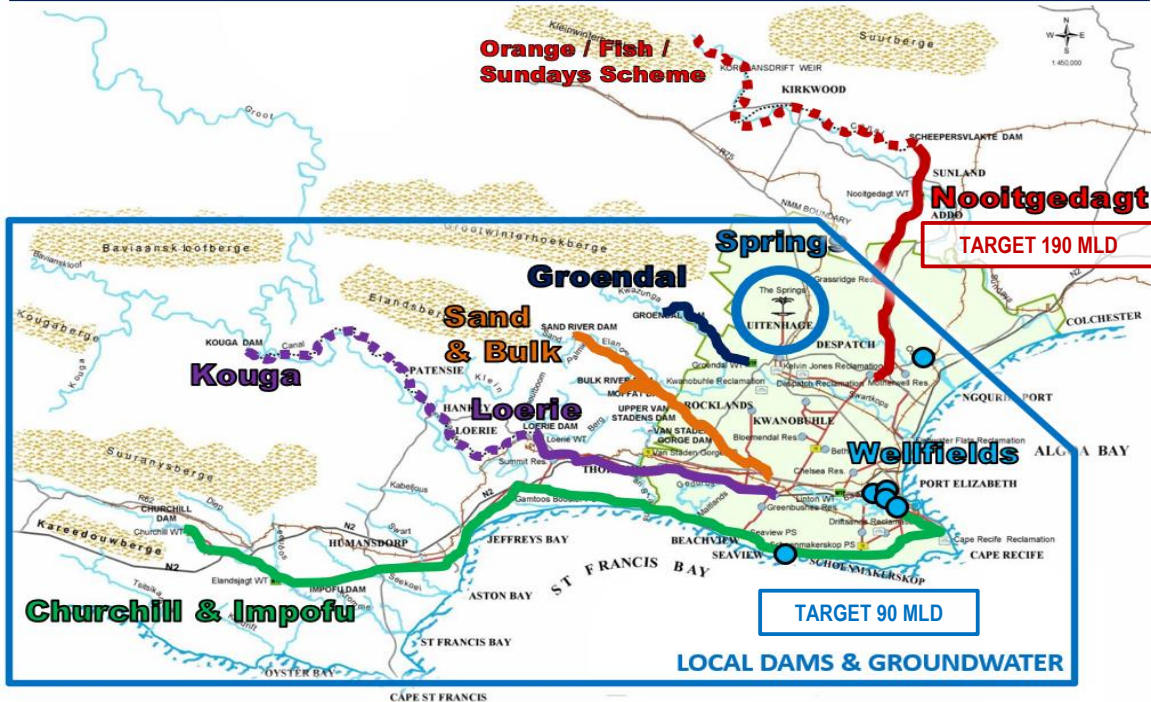
as at Wednesday, 26 March 2025

TOTAL DAM STORAGE	CHANGE FROM A WEEK AGO	WATER PRODUCED (SEVEN-DAY AVERAGE)
72.37%	-0.61%	369 MLD

NMBM TARGET DEMAND = 280 MILLION LITRES PER DAY (MLD)

89 MLD USED OVER TARGET!

NMBM POTABLE WATER BULK SUPPLY SYSTEM



* Note that the targets consider infrastructure reliability, system interconnectivity, and recovery of local dams.

63.39% AVAILABLE LOCAL DAM STORAGE!

System	Dam	Storage capacity (ML)	Current storage (%)	Dead storage (%)	Available storage (%)	Available water (ML)
Kromme	Churchill	35,240	86.95	7.5	79.45	27,998
	Impofu	105,757	55.20	16.5	38.70	40,928
Kouga	Loerie	3,026	80.63	19.0	61.63	1,865
	Kouga	125,910	80.12	3.3	76.82	96,724
Groendal	Groendal	11,638	98.42	4.2	94.22	10,965
Total		281,571	72.37	9.0	63.39	178,480

* The barges have been decommissioned, hence the increase to the dead storage volume at Impofu Dam.

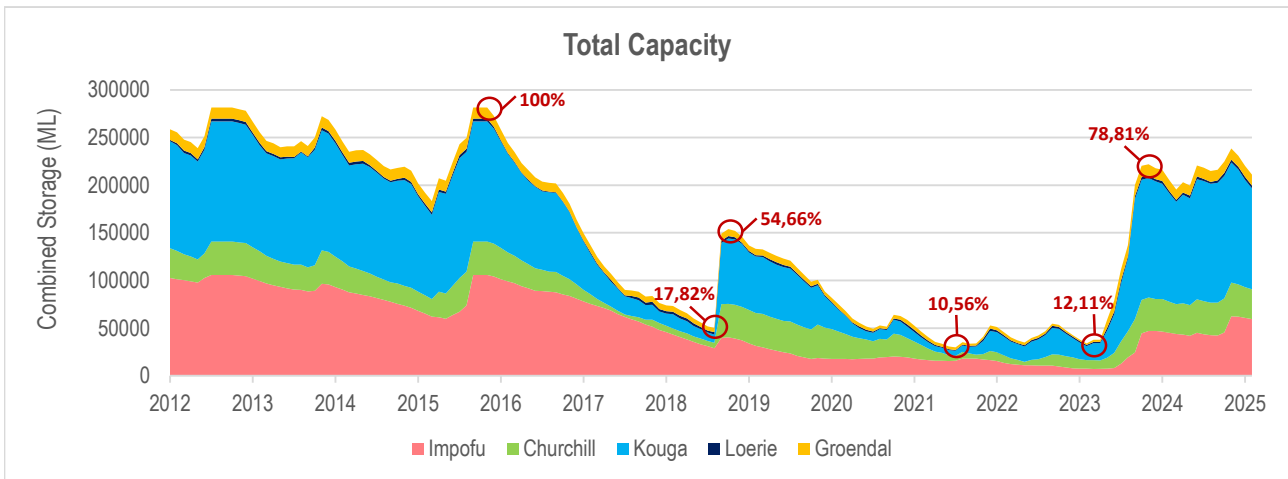
WHEN WILL LOCAL DAMS RUN DRY?

System	Dam	Available water (ML)	ALLOCATION		ACTUAL	
			Usage (MLD)	Water remaining (Days)	Usage (MLD)	Water remaining (Days)
Kromme	Churchill	27,998	72	957	89	774
	Impofu	40,928				
Kouga	Loerie	1,865	251	393	221	446
	Kouga	96,724				
Groendal	Groendal	10,965	13	843	10	1097

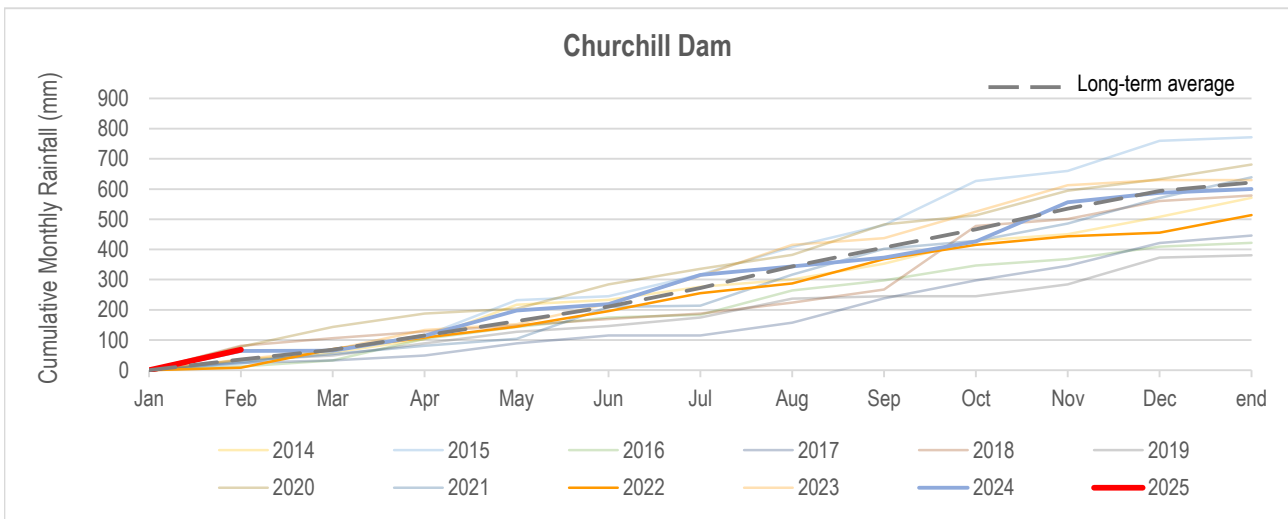
* Allocation from Kouga Dam (251MLD) includes the NMBM's allocation from Loerie Dam (63MLD), Gamtoos Irrigation Board (165MLD), Hankey & Patensie (2MLD), direct irrigators (2MLD) and canal losses.

* Note that restrictions imposed by the Department of Water & Sanitation have been lifted for the Kouga & Groendal Systems. Restrictions for NMBM on Kromme System (23%) effective 01 Nov 2024.

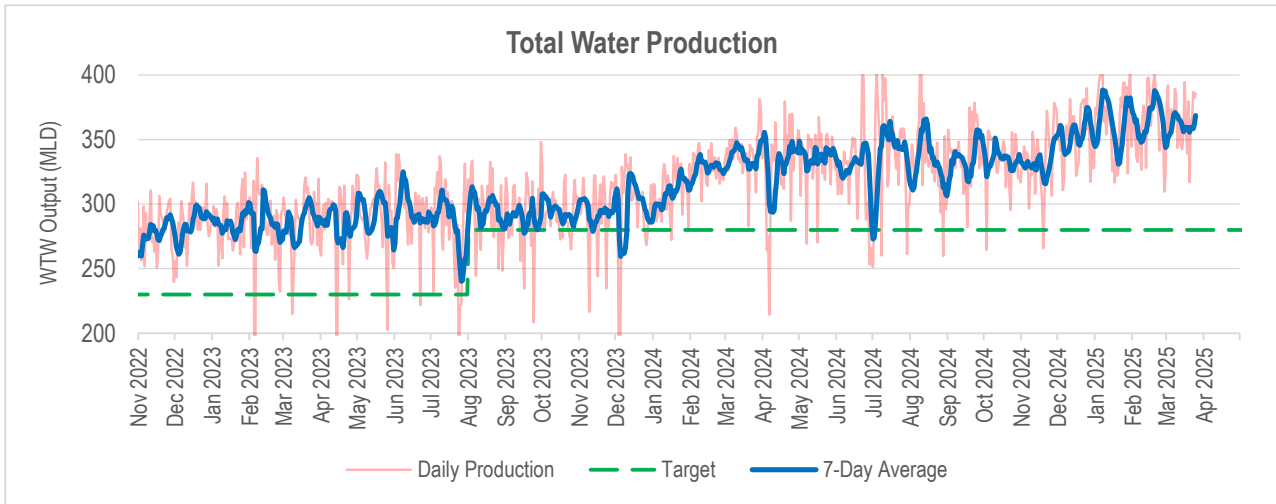
LOCAL DAM STORAGE



RAINFALL IN CATCHMENT AREAS



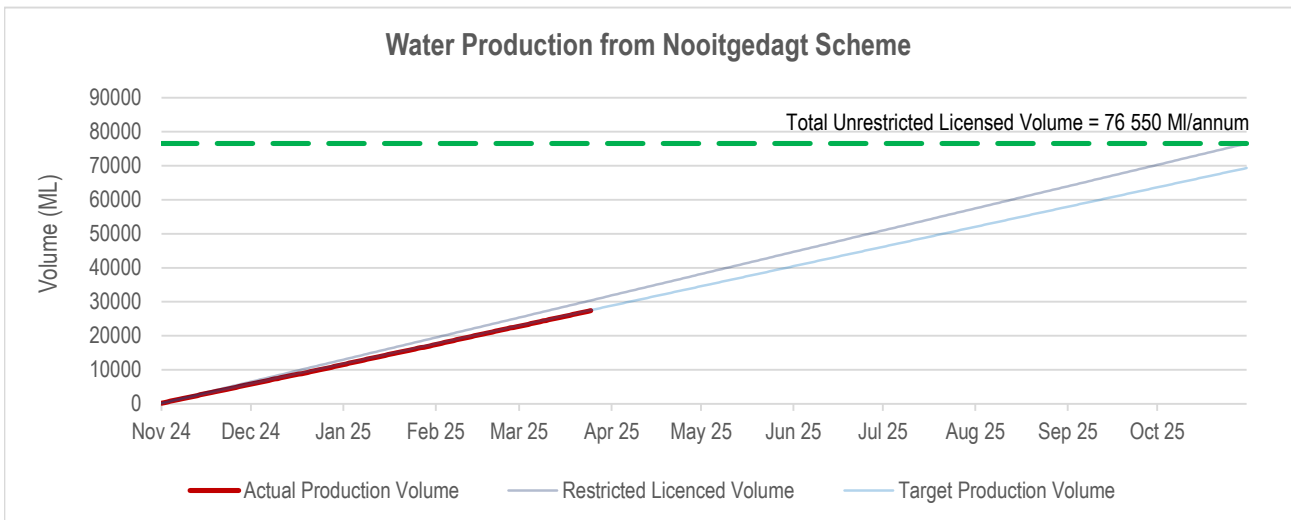
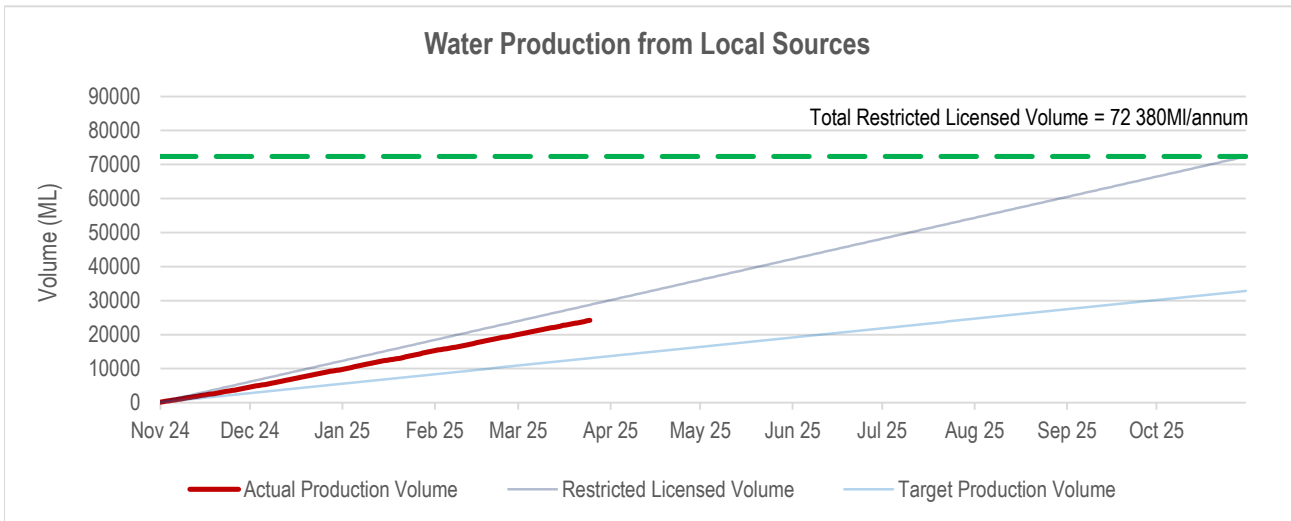
WATER SUPPLIED BY NMBM



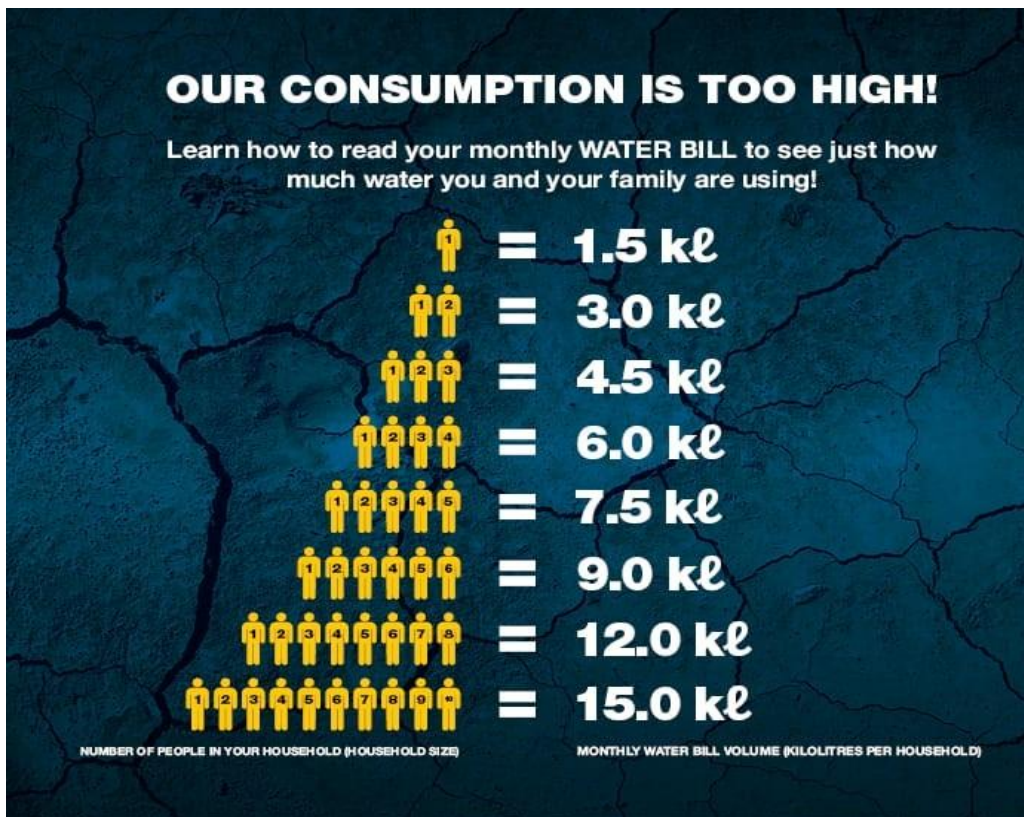
165 MLD	195 MLD	9 MLD
Local Dams	Nooitgedagt Scheme	Groundwater

* Groundwater output is currently limited by licensed abstraction volumes, required quality blending ratios, and operational limitations.

LICENSED ABSTRACTION BY NMBM



WHAT SHOULD I DO?



ONLY USE 50 LITRES PER PERSON PER DAY

 2ℓ Drinking water	 2ℓ Cooking water	 2ℓ Washing hands	 9ℓ 1 toilet flush	 10ℓ 2 minute shower
 9ℓ 1 sink of dishes	 5ℓ Household cleaning	 1ℓ Water for pets	 10ℓ Laundry	