

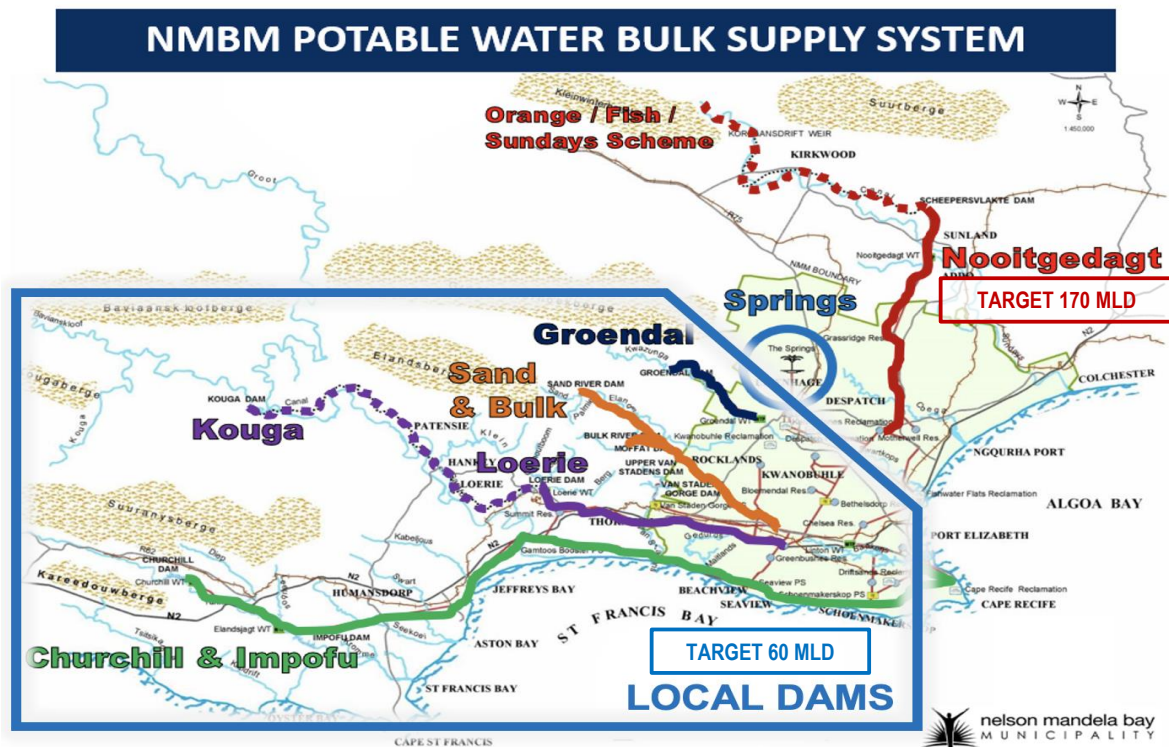
WATER SUPPLY & USAGE STATISTICS

as at day, Tuesday 31 January 2023

TOTAL DAM STORAGE	CHANGE FROM A WEEK AGO	WATER PRODUCED (SEVEN-DAY AVERAGE)
13.52%	-0.52%	296 MLD

NMBM TARGET DEMAND = 230 MILLION LITRES PER DAY (MLD)

66 MLD USED OVER TARGET!



* Note that the targets consider infrastructure reliability, system interconnectivity, and the recovery of local dams.

ONLY 8.13% AVAILABLE LOCAL DAM STORAGE!

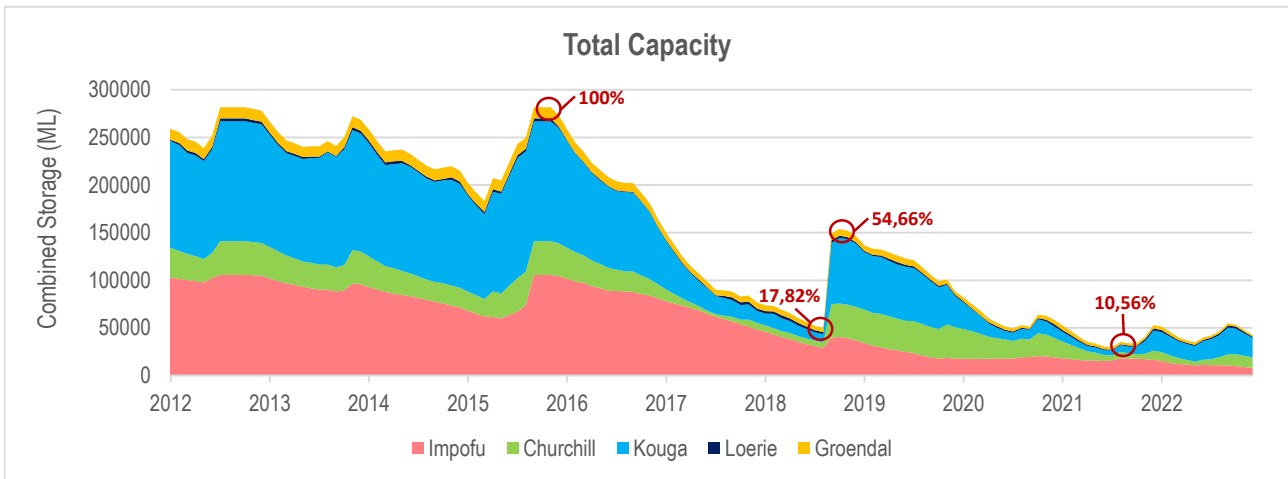
System	Dam	Storage capacity (ML)	Current storage (%)	Dead storage (%)	Available storage (%)	Available water (ML)
Kromme	Churchill	35,240	28.61	7.5	21.11	7,439
	Impofu	105,757	6.91	7.0	0.00	0
Kouga	Loerie	3,026	48.98	19.0	29.98	907
	Kouga	125,910	13.89	3.3	10.59	13,334
Groendal	Groendal	11,638	14.63	4.2	10.43	1,214
Total		281,571	13.52	5.4	8.13	22,894

WHEN WILL LOCAL DAMS RUN DRY?

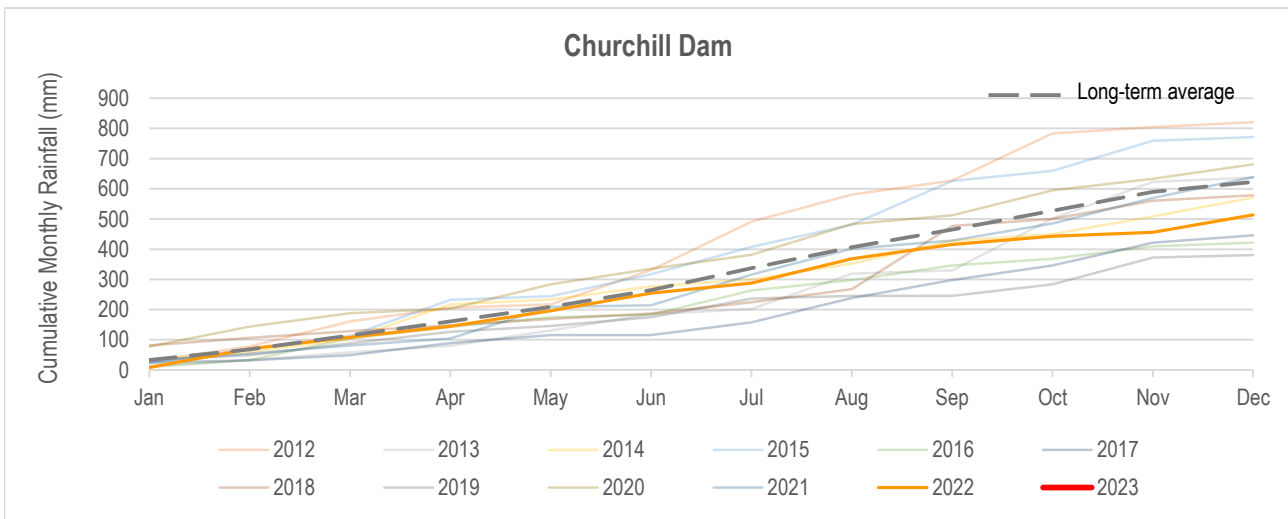
System	Dam	Available water (ML)	RESTRICTED		ACTUAL	
			Usage (MLD)	Water remaining (Days)	Usage (MLD)	Water remaining (Days)
Kromme	Churchill	7,439	31	240	50	149
	Impofu	0				
Kouga	Loerie	907	95	150	95	150
	Kouga	13,334				
Groendal	Groendal	1,214	5	243	8	152

* Abstraction from Kouga Dam (95MLD) includes the NMBM's allocation from Loerie Dam (41MLD), Gamtoos Irrigation Board (33MLD), Hankey & Patensie (2MLD), direct irrigators and canal losses.

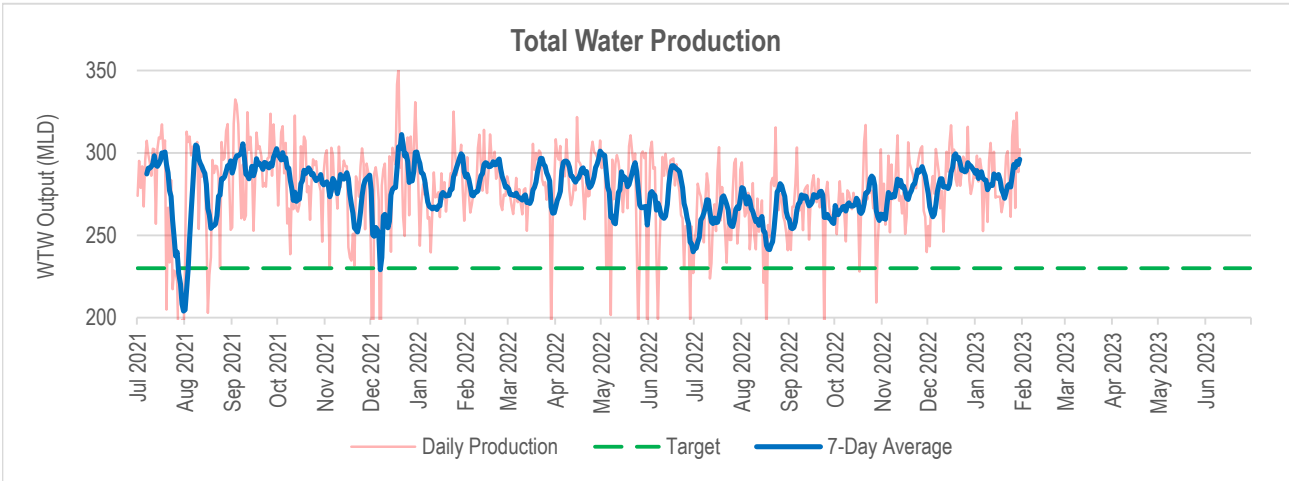
LOCAL DAM STORAGE



RAINFALL IN CATCHMENT AREAS

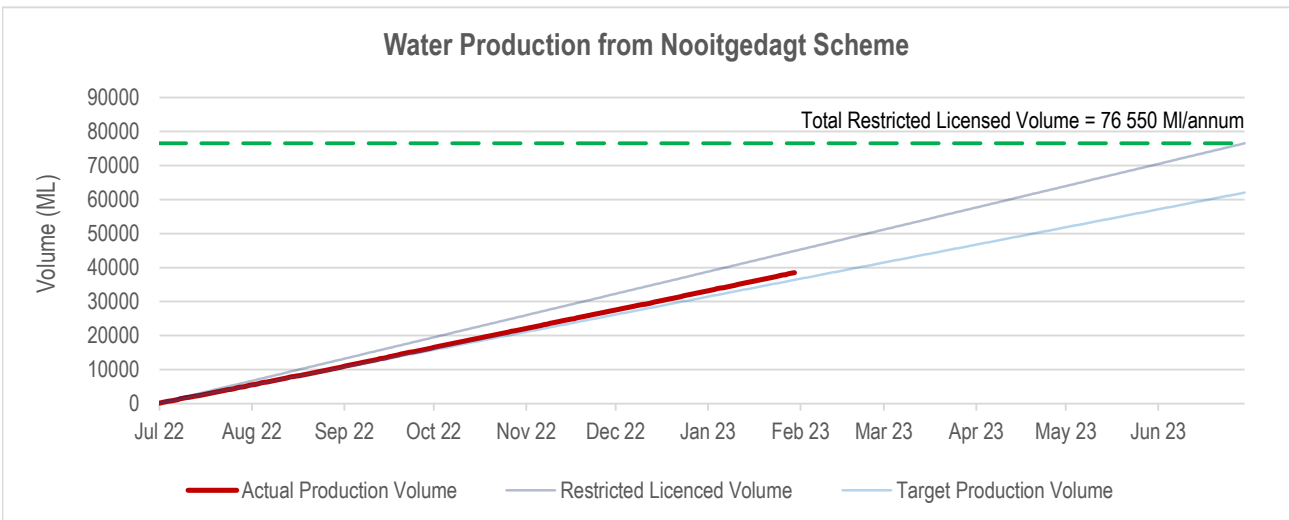
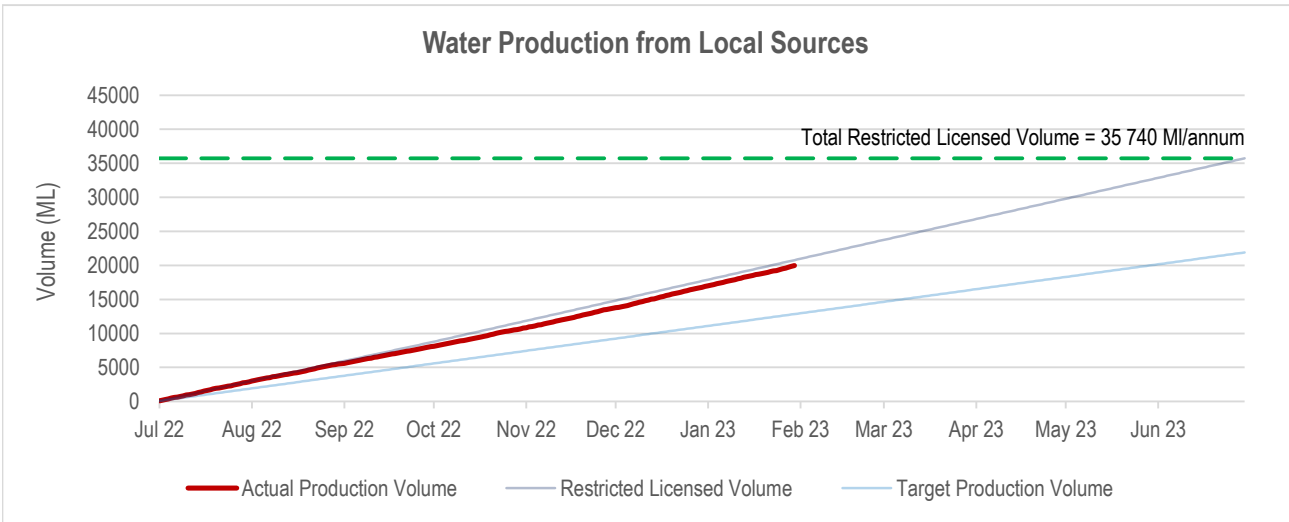


WATER SUPPLIED BY NMBM

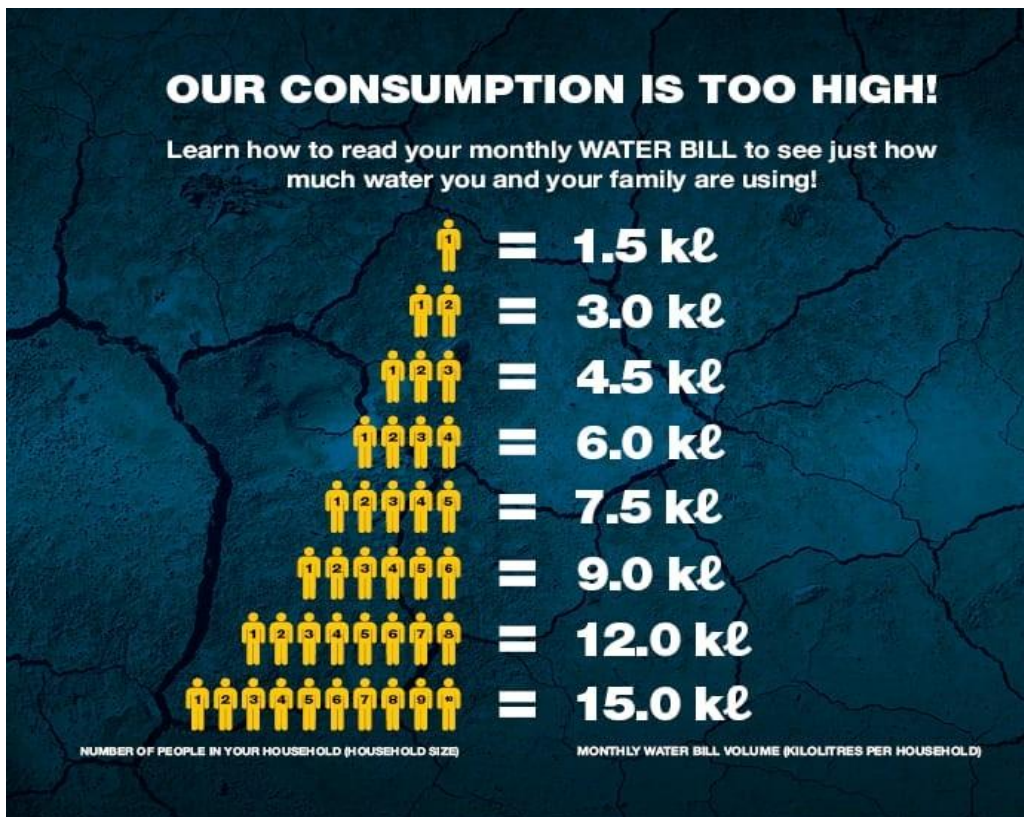


108 MLD	184 MLD	4 MLD
Local Dams	Nooitgedagt Scheme	Groundwater

LICENSED ABSTRACTION BY NMBM



WHAT SHOULD I DO?



ONLY USE 50 LITRES PER PERSON PER DAY

 2ℓ Drinking water	 2ℓ Cooking water	 2ℓ Washing hands	 9ℓ 1 toilet flush	 10ℓ 2 minute shower
 9ℓ 1 sink of dishes	 5ℓ Household cleaning	 1ℓ Water for pets	 10ℓ Laundry	