

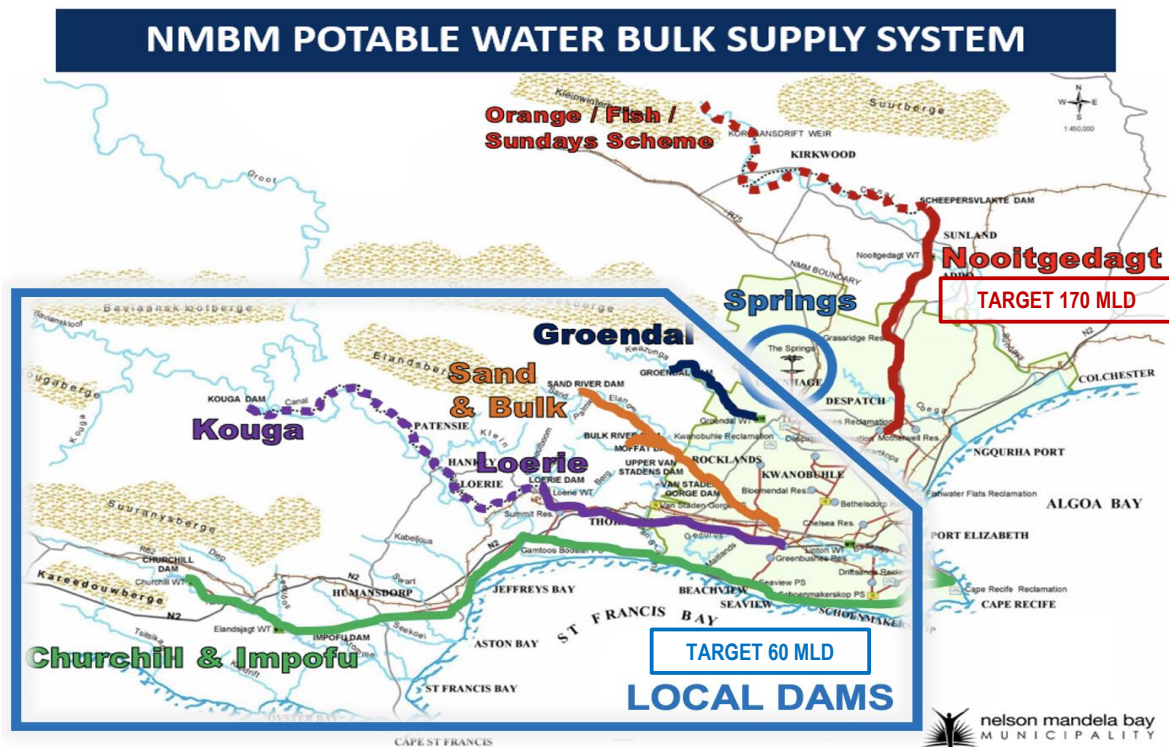
WATER SUPPLY & USAGE STATISTICS

as at day, Friday 9 June 2023

TOTAL DAM STORAGE	CHANGE FROM A WEEK AGO	WATER PRODUCED (SEVEN-DAY AVERAGE)
21.98%	+0.35%	325 MLD

NMBM TARGET DEMAND = 230 MILLION LITRES PER DAY (MLD)

95 MLD USED OVER TARGET!



* Note that the targets consider infrastructure reliability, system interconnectivity, and the recovery of local dams.

ONLY 16.55% AVAILABLE LOCAL DAM STORAGE!

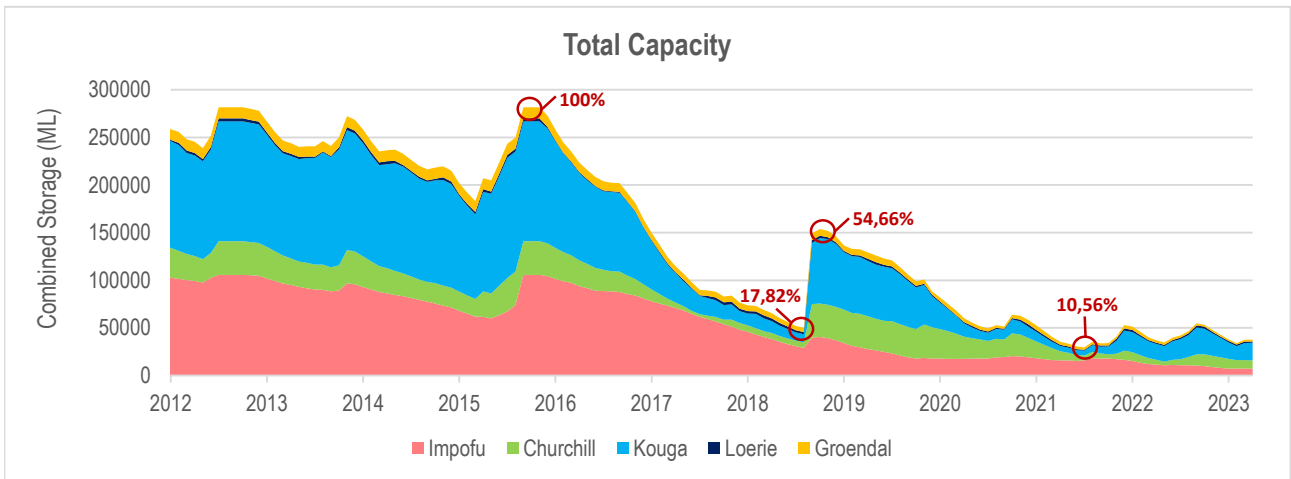
System	Dam	Storage capacity (ML)	Current storage (%)	Dead storage (%)	Available storage (%)	Available water (ML)
Kromme	Churchill	35,240	33.96	7.5	26.46	9,325
	Impofu	105,757	7.01	7.0	0.01	0
Kouga	Loerie	3,026	87.71	19.0	68.71	2,079
	Kouga	125,910	24.40	3.3	21.10	26,567
Groendal	Groendal	11,638	78.46	4.2	74.26	8,642
Total		281,571	21.98	5.4	16.55	46,613

WHEN WILL LOCAL DAMS RUN DRY?

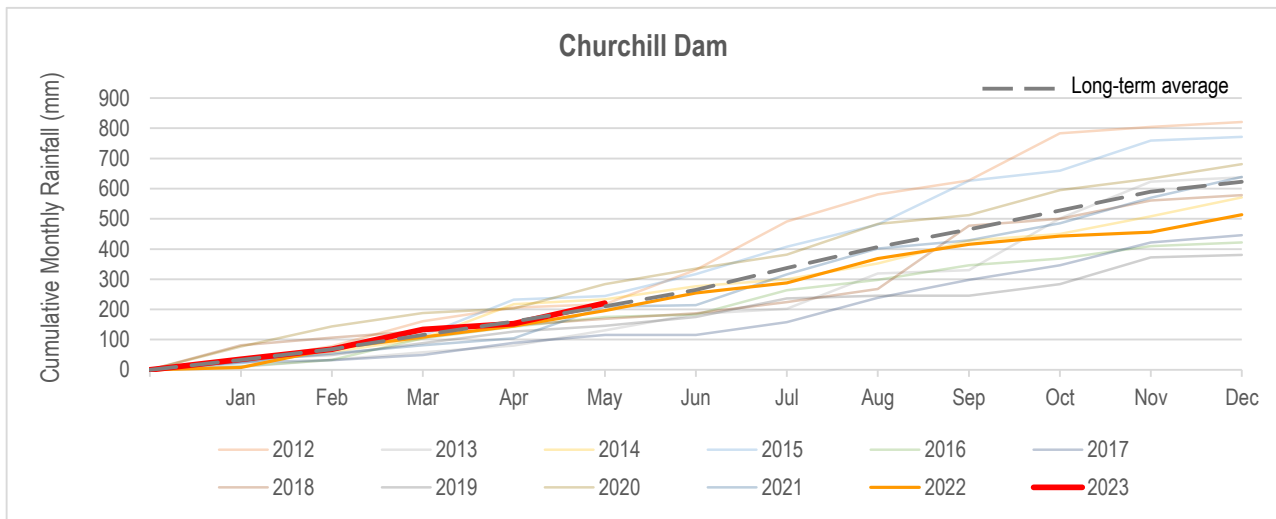
System	Dam	Available water (ML)	RESTRICTED		ACTUAL	
			Usage (MLD)	Water remaining (Days)	Usage (MLD)	Water remaining (Days)
Kromme	Churchill	9,325	31	301	31	301
	Impofu	0				
Kouga	Loerie	2,079	95	302	95	302
	Kouga	26,567				
Groendal	Groendal	8,642	5	1728	6	1440

* Abstraction from Kouga Dam (95MLD) includes the NMBM's allocation from Loerie Dam (41MLD), Gamtoos Irrigation Board (33MLD), Hankey & Patensie (2MLD), direct irrigators and canal losses.

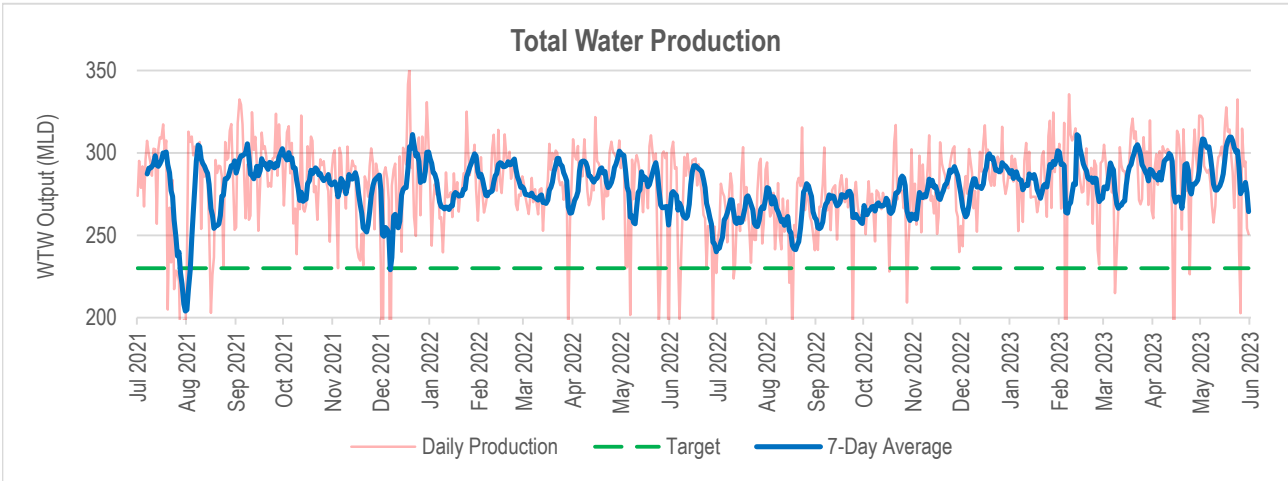
LOCAL DAM STORAGE



RAINFALL IN CATCHMENT AREAS

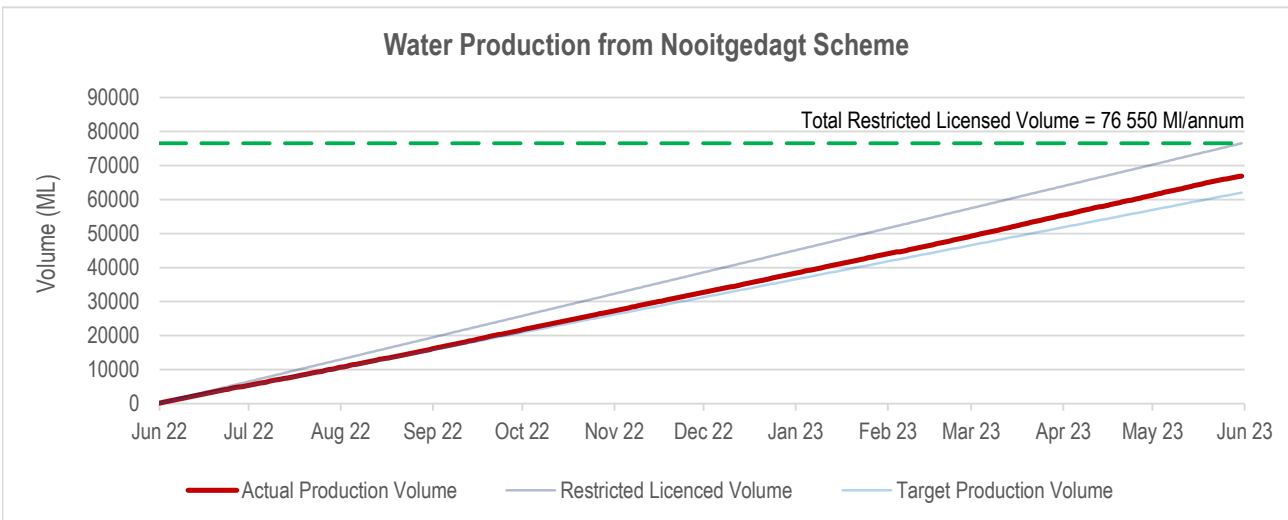
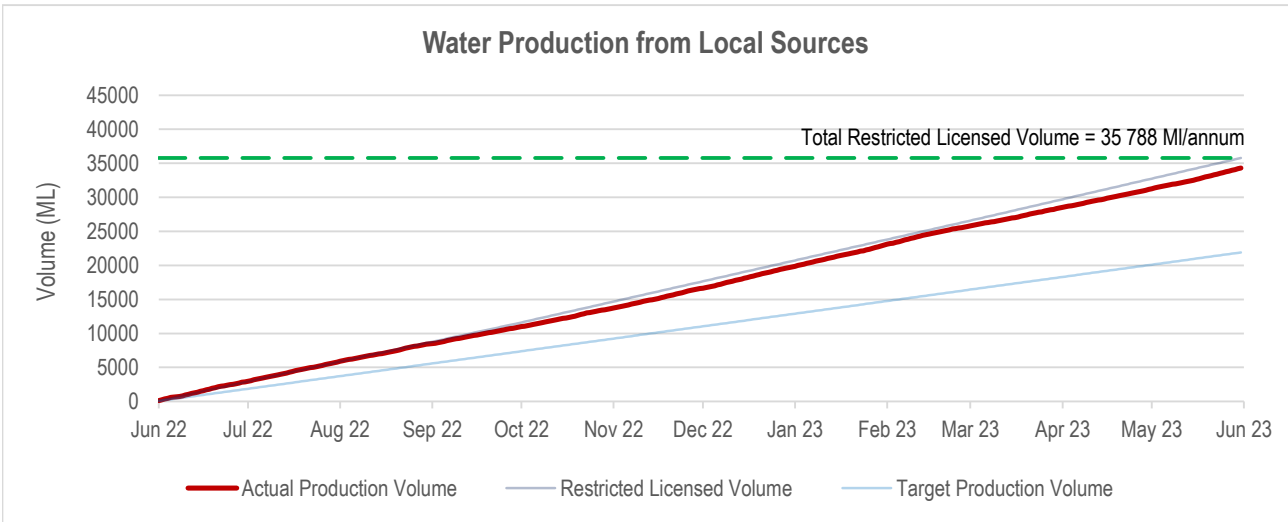


WATER SUPPLIED BY NMBM

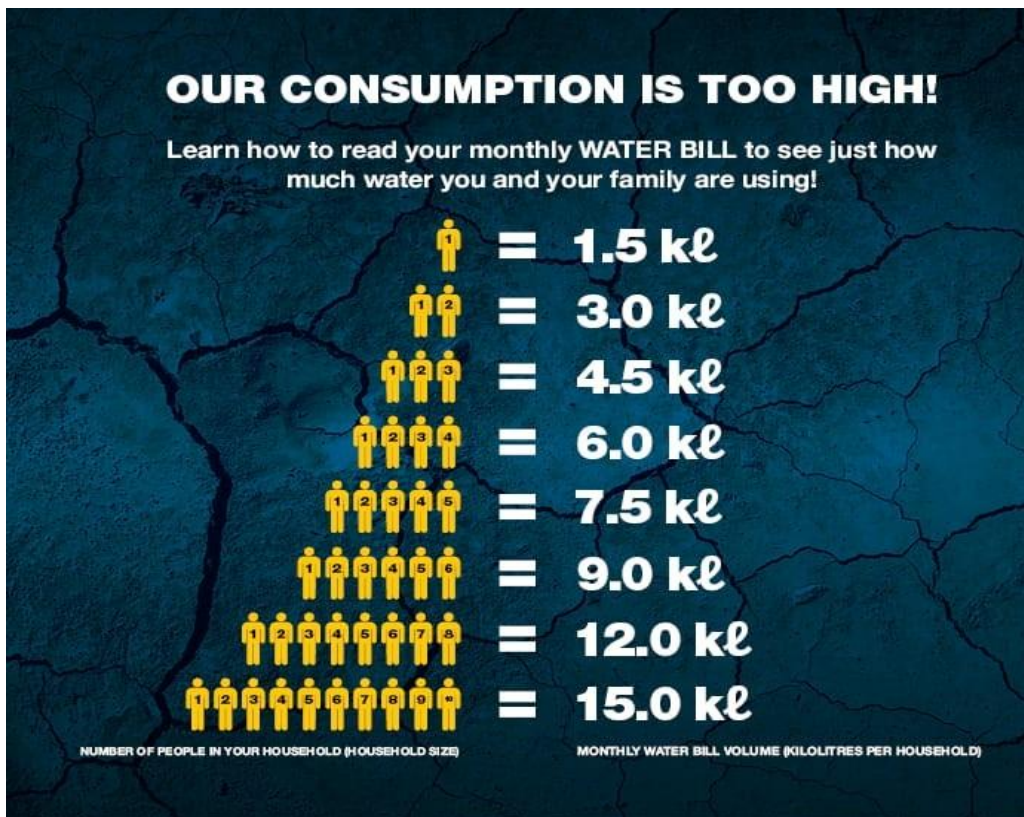


122 MLD	189 MLD	14 MLD
Local Dams	Nooitgedagt Scheme	Groundwater

LICENSED ABSTRACTION BY NMBM



WHAT SHOULD I DO?



ONLY USE 50 LITRES PER PERSON PER DAY

 2ℓ Drinking water	 2ℓ Cooking water	 2ℓ Washing hands	 9ℓ 1 toilet flush	 10ℓ 2 minute shower
 9ℓ 1 sink of dishes	 5ℓ Household cleaning	 1ℓ Water for pets	 10ℓ Laundry	